

# Long Beach Area Council's Scout-O-Rama Quick Guide



Saturday June 4th, 2016

Heartwell Park, Long Beach

Corner of Clark and Carson across from Long Beach City College

*"A full day of fun and celebration for the entire family"*

## What Do We Need To Know?

Listed here is the **important** information you'll need to know for the day. Detailed information will be emailed to you. Use this as a quick reference only.

- Theme – “DIVERSITY WITHIN SCOUTING”
- Date - Saturday June 4<sup>th</sup>, 2016
- Time - 9AM - 3PM
- Location - Heartwell Park (corner of Clark and Carson)
- Check In – Check In table will be set up at the main entrance at 7:00AM
- Equipment Drop Off - There is a special **drop off** area for all equipment. Unload it, move it to your assigned space and relocate your vehicle to the parking structure.

### NO PARKING ON THE GRASS.

- Parking – Parking is available at the LBCC parking garage across the street from Heartwell Park. Cost is \$2.00 for the day.
- Opening Parade – Units line up with your flags starting at the corner of Clark and Carson at 8:45AM
- Booths- Booths will be open from 9:30 - 2:30PM
- Food – Food Trucks and a concession stand with snacks, drinks, and candy will be available for a fee.
- **No** food may be served by a unit to the public for any reason.
- Patches – Patches are available for pre-sale only at \$2.00 each. Turn in order w/ reservation.
- Unit Judging – Judging will be conducted to determine the top unit displays for which ribbons will be awarded.
- Tables and chairs are **not** provided. Please bring your own.
- Units are encouraged to pre pay for food tickets. **Vendors do not take cash**, ticket booth will be set up.

# ~ 2016 Scout-O-Rama Rating Form ~

\_\_\_\_\_ Troop Pack Girl Scout Troop Post Ship Crew

\*TOTAL SCORE \_\_\_\_\_

\_\_\_\_\_ Theme or Activity

“Honor, Service, Tradition”

1. Unit is identified	4				0
2. US Flag is displayed correctly	4				0
3. Chartered Organization is identified	4				0
4. Adequate adult supervision present (At least 1 adult at all times)	4	3	2	1	0
5. Youth are in uniform	4	3	2	1	0
6. 2016 SOR theme is obvious in exhibit	4	3	2	1	0
7. Exhibit is titled	4	3	2	1	0
8. Youth prepared the exhibit	4	3	2	1	0
9. Youth are demonstrating the exhibit	4	3	2	1	0
10. Exhibit demonstrates scouting to the public (ex: leave no trace)	4	3	2	1	0
11. Opportunity for public involvement	4	3	2	1	0
12. Originality, cleverness, creativity of exhibit	4	3	2	1	0
13. Scout's attitude	4	3	2	1	0
14. Scouts are helping the public at exhibit	4	3	2	1	0

Number of marks in each column:	___	___	___	___	___
Multiply by:	4	3	2	1	0
<b>Result totals:</b>	___	___	___	___	

Total results added together \_\_\_ + \_\_\_ + \_\_\_ + \_\_\_ + \_\_\_ = \_\_\_\_\_  
\*TOTAL SCORE

# Long Beach Area Council



## GENERAL INFORMATION

Scout-O-Rama is an outdoor show with more than a hundred exhibits demonstrating the interests, skills, and activities of Tiger Cubs, Cub Scouts, Webelos, Boy Scouts, Venturers, Sea Scouts, Explorers, and Girl Scouts. Unit participation provides Scouts the opportunity to demonstrate their skills and abilities to parents, friends, and the community. It also serves as a program resource for your unit. It stimulates advancement, introduces the various areas of Scouting to the public, provides a "hands-on" experience, and it's ***FUN!***

Your exhibit should have four (4) parts in order to be effective:

1. Correctly uniformed Scouts in an eye-catching setting displaying the theme. There should be minimum adult visibility in the exhibit or area.
2. A "hands-on" experience for the public. Invite people to try their skills. Be sure to have plenty of materials available.
3. A give-away, either in the form of a prize or the actual item they have made. Use your imagination!
4. Establish a rotation schedule so every Scout and parent has the chance to enjoy Scout O Rama.

## THEME

This year's theme is: Diversity within Scouting

## EXHIBIT DROP OFF AND SET-UP

There is a special drop off area for your unit's equipment at Heartwell Park. Your unit can drop off at 7am and there is **NO** parking on the grass. Schedule your units set up crew accordingly. Once your equipment is dropped off, immediately move your gear to your booth and your vehicles to the LBCC parking. The cost for parking is \$2.00 for the day.

## RESTRICTIONS:

- Due to health code restrictions, **no** food items may be prepared and handed out to the public by any unit.
- No unit generators are permitted due to city restrictions. Contact Roger Olson, SOR Chair, at [scoutmanroger@gmail.com](mailto:scoutmanroger@gmail.com) for special requirements.
- Sale of commodities by units is strictly prohibited by city codes.

# 2016 Scout-O-Rama Exhibit Plans, Awards, and Exhibitor Information

Welcome to the exhibit planner for Scout-O-Rama (SOR). It gives you a head start on laying out your booth and building in safety. Safety is necessary for every participant to have a great time at the 2016 Scout O Rama and to ensure that all participants can go home at the end of the day without a visit to the First Aid facility on their way. All activities at SOR must meet the same requirements for a healthy and safe activity. Every booth will be reviewed by members of the SOR Team for safe and healthy operations; booths not meeting general or specific plans or safe activities will be corrected before welcoming visitors.

Your planning may be as simple as completing a single form, showing your general exhibit (booth) layout, and sending it in to the Scouting Center. If your activity includes highlighted activities (climbing, hot coals, use of knives, for some examples) your registration will depend upon planning to manage the risks so your activity can be as thrilling as it is safe.

During this planning process, you have a chance to "juice it up". to make your exhibit better than last year--better graphics, more exciting, more challenging, new knowledge--the possibilities are endless. Familiar exhibits are good, some are classics! But sometimes, excitement grows with new challenges for your unit and something new for the guests to experience. Challenge yourselves to see what you can come up with for SOR 2016.

PLEASE NOTE: Safe Scouting means avoiding unnecessary risks. For that reason, climbing, rappelling, and excessively high (over 4 feet from the ground) exhibits will not be approved. Zip-lines are not permitted; Slack Lines less than three (3) feet high, with appropriate spotters or crash pads, may be used as an alternative as long as the Unit Members know and follow proper setup, operational guidelines and safety techniques, and comply with the BSA Climbing and Safety Standards. Exhibits approved in the past may need to be revised, or in some cases eliminated, to meet the Safe Scouting requirements. You will also note that the materials this year include a parental informed consent release and acknowledgment form. This added form is intended to raise awareness of the need for safety in all aspects of the Scouting Experience, and is required for each participant. Many questions can be answered by reference to the Guide to Safe Scouting, available on line at:  
<http://www.scouting.org/scoutsource/HealthandSafety/GSS/toc.aspx>.

Booth Layout: This is the key to your planning and aids the SOR team review of your exhibit. It shows us that you understand the borders of your requested exhibit space, and how you will use it. A floor plan of the plot, labeled "table, rope-bridge, wash stand, cold-box, game box" etc. shows the things and activities we can expect to see on "game day". Even the simplest activity can benefit from a graphic layout. Your application cannot be approved without that part of the document completed.

## Clearance

- From walk way: all unit displays will have a setback from the walk way. This setback is to prevent sidewalk blockage. This is still a public thoroughfare. Minimum setback will be 3 feet.
- Between each unit activity must be maintained.

Green Ribbon Award (Safety): Each exhibitor that completes an exhibit plan and has included the necessary healthy and safe measures will be eligible for the Green Ribbon Award by the SOR Inspectors. It is a mark of pride for every unit to place it on their unit flag. Post safety application and approval on your exhibit before 9:00 am on the day.

General standards for all SOR participants:

Leave the following at home: Pets Firearms Fireworks Alcohol Foul Language

All Activities must conform to the Guide to Safe Scouting and Age Appropriate Guidelines. These may be accessed at

<http://www.scouting.org/scoutsource/HealthandSafety/GSS/toc.aspx>

Following are specific minimum requirements for SOR Exhibits that include the stated risks.

*Your application must explain how you will accomplish these necessary controls.*

Measures That Will Make Stand-Out Booths into Risk-free Exhibits:

On all Exhibits:

- If your exhibit generates trash, provide appropriate receptacles and remove to dumpsters.
- Hazardous stakes or posts must be blunted (such as rebar caps) or guarded to eliminate potential personal injury.

Projectiles or Thrown Objects: (Rubber Bands, catapults, balls, potatoes, rockets, etc.)

- Contained by booth shrouds or cited on the SOR projectile range (by request).
- Target setters/crew out of line of fire
- Eye protection for crew/target setters (as appropriate).
- Crew positioned away from mechanisms.
- Gloves (where needed) and eye protection for participants

Climbing over 4 feet:

- Participants must be secured from falling lower of shoulder height or 4 ft.
- Personal spotting approved for smaller participants (under 50 lbs).
- Participants-adequate footwear.
- Railings at 22 and 44 inches suffice
- On towers and climbing walls:
  - o *Climb-on Safely* Standards
  - a Certified climbing instructor a BSA Guidelines on age.
  - o Parent Permission required a Standard climbing discipline and head protection.
  - a Harnesses must fit
  - a Trained, experienced crew
  - a Belayed or secured (tied off) on unprotected platforms
  - o Stakes blunted and within exhibit area.
  - a Tripping hazards made visible

and shielded.

- On bouldering walls
  - a Falls over shoulder height or 4 feet, prevented.
  - o Hazards clear of fall zone.
  - a Personal spotting is approved
  - o Climbing to the top not permitted.
- Climbing ladders, vehicle entry to 6 feet do not require protection. (Recommend spotting for youngsters.)

Lake Activities (Council approval):

- *Safety Afloat* applies.

Pushed or wheeled vehicles:

- Personal protective gear as necessary: helmets, gloves.
- Tested for safe operation.
- Age appropriate limits
- Participants must be able to control the vehicle.

Pugle Sticks. Padded Swords. or Other

- Age appropriate
- Contestants matched size, age and weight
- Padding secure and effective
- Eye protection.

Chemical or reactive substances

- Eye Protection
- Containment
- Aprons, gloves as appropriate

Use of Knives or other sharps

- Senior Scout! Adult supervision
- Age appropriate use only.
- Tote and Chip guidelines apply

Other Hazards

- Identify other hazards
- Determine and report measures to control them.
- Establish age appropriateness.

Visitors from Risk Management will come to your exhibit before opening ceremony. Your visitor will review your exhibit to verify that it conforms to your application and planned safety measures. He or she will not be able to complete the review until your exhibit is complete and ready to operate as you intend.

Scout, Venture and Explorer Units: Have your youth unit leader ready to show the visitor through the exhibit and demonstrate the activity. Show him or her the safety application and any approval or recommendations you have received from the risk review. Explain any changes to your exhibit since your application was submitted. Be prepared to show the safety and health measures you have included in your activity. Your unit will be awarded the Green Safety Ribbon immediately upon successful review. Congratulations!

Cub Scout Units: Have your youth leader and booth supervising adult ready to show the visitor through the exhibit and demonstrate the activity. Show him or her the safety application and any approval or recommendations you have received from the risk review. Explain any changes to your exhibit since your application was submitted. Be prepared to show the safety and health measures you have included in your activity. Your unit will be awarded the Green Safety Ribbon immediately upon successful review. Congratulations!

Units without prior safety approval: Units without an approved safety application will not begin public activities until the risk management review is completed and approval provided by the visitor. If you are ready to open your exhibit and no visitor has come from Risk Management by 9:00am, please send a representative to the Information Booth to request a visit from the Risk Team.

Units with incomplete Safety and Health Measures: Units that have not completed the safety application process or units that have significantly changed their exhibit activity will not set up on the field until they have contacted Risk Management at the information booth and provided and received approval for their activity. Risk management is on-site from 7:30am on SOR Saturday. Do not unload until this approval is obtained.

Assigned Exhibit Space: Occupying your assigned space is very important. The ability of SOR officials to direct members to your site depends upon it. Changes on the day cannot be reflected in guide sheets. Please do not occupy a different site without permission from the registration information staff located at the information booth. Contact staff if there is any question or problem with your assigned space. Staying within the marked boundaries, including keeping clear of the aisles (mandatory emergency access of 20 feet) will show respect for your neighbors. There are solutions for space problems available at the Information Table.

#### Park Services:

Lost and Found: The Commissioner's Booth. Bring and claim items.

#### First Aid:

In an emergency, contact a SOR Staff Member or send a runner to the Long Beach Search and Rescue booth a facility marked, "First Aid." Radio equipped staff members can contact the emergency staff directly.

Lost People: Service will be provided by the Long Beach Search and Rescue located near the sidewalk intersection at the blue and white trucks. (There will be no "lost parent" public address announcements. In an emergency, contact a SOR Staff member or come to the Long Beach Search and Rescue booth.

Water: STAY HYDRATED!

Bring plenty of water, as there are no potable water sources on site. “The environmentalist type” will recommend reusable containers. Please find a good balance between convenience and reusable. This could be a large jug to refill from.

Foods: health codes in California prevent the preparation and distribution of locally made foods unless their distribution meets code. This will include a permit from the city and proper training. **In general no food distribution by units.**

Ash and Hot Coal Disposal: No fires are permitted. Therefore no coal collection points exist.

Pet Boarding: None. All city regulations for pets in public space are in full effect. Leaving your pets home makes sense for all. As many young scouts may be afraid of pets (dogs)

Other Substances: Prepare to remove any chemical waste from the park in your own closeable containers.

Cleanup:

City Park staff is not responsible for trash pickup from our event. During your load out keep some scouts on hand to form a cleanup detail.

Sample activities are found in the following pages. A blank floor plan page is included for use as template.



Activity Title:

Troop XYZ Activity is paper Dolls.

Activity Description:

Each visitor will design and build a paper doll from the materials supplied at this station.

Visitors will operate pencils, crayons, scissors and tape dispensers in the process of making their doll.

Hazards, possible:

1. Scissor cut
2. Paper cut
3. Tape cutter edge

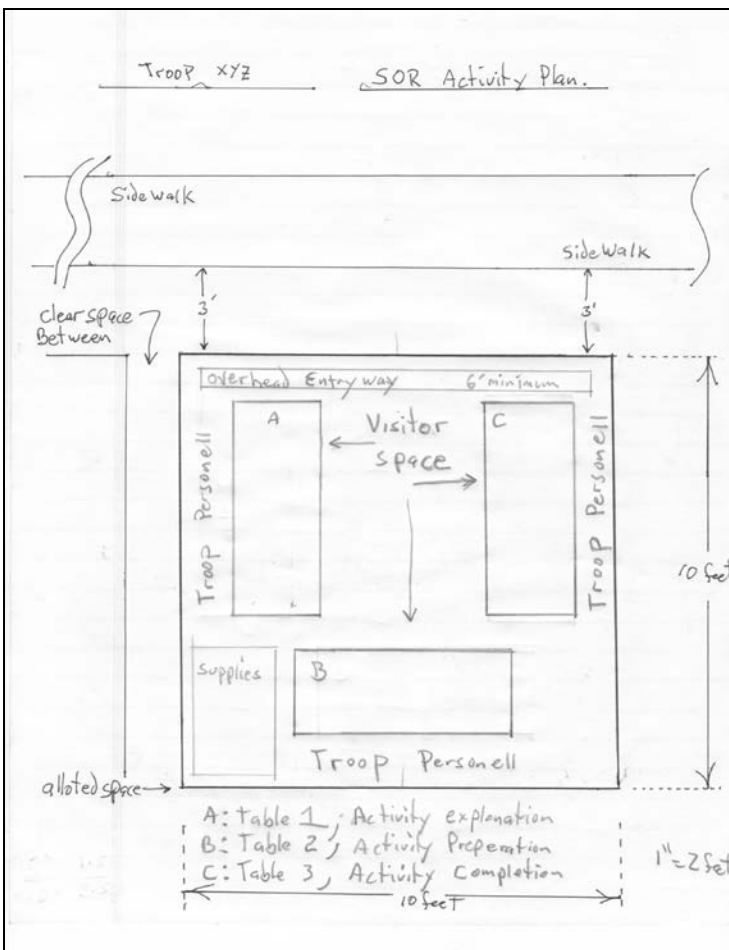
Hazard preventions:

1. Control the number of visitors operating possible hazard items.
2. Provide one to one supervision to observe, direct and prevent personal injury from the identified issues.

Hazard remediation:

First aid will be on hand and injuries will be tended to that are within our skills and training. It will be in the supplies area as shown in the floor plan.

Entry Way: This will be our standard troop sign. Its lowest point will be 6.5 feet.



Sample 2:

Activity title: Dodge ball

Activity description: Scouts and public visitors will be grouped into teams. They will compete based on the rules presented at start of session.

Hazards, from possible contact with ball or person:

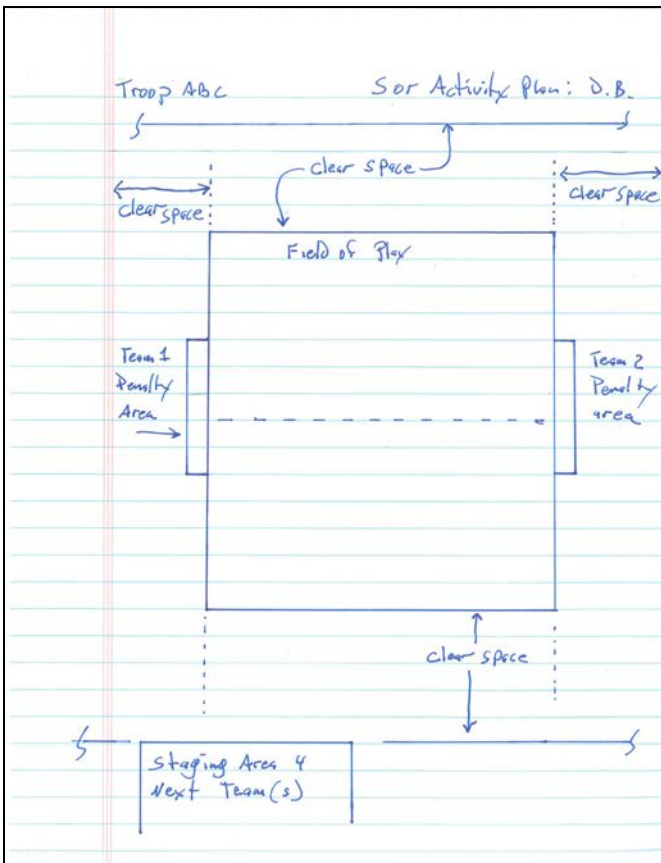
1. Face injury, bloody nose, cut/swollen lips, ear injury,
2. Finger bent/stretched. Broken
3. Chest injury from ball impact
4. Concussion from head collision
5. Twisted ankle
6. TBD

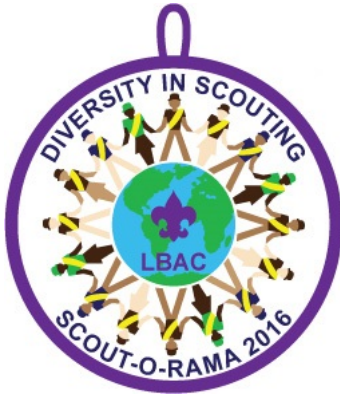
Hazard prevention:

1. Head protection- helmet (bicycle helmet with ear coverage)
2. Minimize number of participants in the field at any time.
3. Multiple spotters will be used to control flow of game.
4. Expulsion from all play all day.
5. Control size/weight/ability of participants on field at a time.
6. Control energy level of game.

Hazard remediation:

Control of game. First aid on hand including extra Cold compress for simple injury based on training received.





# Scout-O-Rama 2016

## “Celebrating the Diversity in Scouting”

Scout-O-Rama, sponsored by the Long Beach Area Council, is a large outdoor event where scouts showcase games, crafts, activities, and skills. There will be over 100 booths and activities at this annual event.

**Date:** Saturday, June 4, 2016, 9am-3pm

**Location:** Heartwell Park, Long Beach, CA  
(Corner of Clark and Carson Avenue)

**Parking:** LBCC parking structure: \$2 all day

### Sign up Today:

Leader Name \_\_\_\_\_ Phone# \_\_\_\_\_

Email \_\_\_\_\_

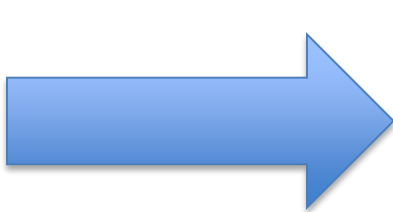
Pack/Troop/Crew/ Ship/Post/ Girl Scout Troop (circle one) \_\_\_\_\_

Number of Patches at **\$2.00 each** \_\_\_\_\_ Total \$ \_\_\_\_\_

Booth Activities \_\_\_\_\_

Spaces needed (10 x 10 each) \_\_\_\_\_

\_\_\_\_\_



**Set-up/check-in begins 7:30am Saturday morning!**  
**Please keep unloading to 15-20 minutes**

Mail or bring completed registration form and check to:

Long Beach Area Council  
Attn: Scout-O-Rama  
401 E. 37<sup>th</sup> Street  
Long Beach, CA 90807



**Reservations will not be recognized after May 27, 2016:** Contact the SOR Chair for special arrangements.

For additional information please contact:  
SOR Chair: Roger Olson at [scoutmanroger@gmail.com](mailto:scoutmanroger@gmail.com)  
or Rebekah Havard at [Rebekah.Havard@scouting.org](mailto:Rebekah.Havard@scouting.org)



**BOY SCOUTS OF AMERICA**  
LONG BEACH AREA COUNCIL

**LBAC Scout-O-Rama Activity Safety Approval and Safety Award Application**

UNIT	<input type="checkbox"/> P <input type="checkbox"/> T <input type="checkbox"/> V/E/Post	#	DISTRICT	
ADVISOR NAME				
EMAIL			TELEPHONE	/ /

THEME OF ENTRY	
----------------	--

DESCRIBE ACTIVITY	
-------------------	--

SAFETY MEASURES PLANNED	
-------------------------	--

	NO	YES*	WHAT / REMARKS
DOES YOUR BOOTH OR ACTIVITY INCLUDE:			
PROJECTILES OR THROWN OBJECTS			
CLIMBING OVER 4 FEET			
PUSHED OR WHEELED VEHICLES			
COOKING OR OTHER FIRE, COALS OR STOVES			
PUGEL STICKS, PADDED SWORDS OR OTHER			
CHEMICAL OR OTHER REACTIVE SUBSTANCES			
USE KNIVES OR OTHER SHARPS BY VISITORS			
PERISHABLE FOOD PREPARATION			
OTHER RECOGNIZED HAZARDS			IDENTIFY:

**\*A YES ANSWER REQUIRES SAFETY CONTROLS FOR EACH HAZARD OR ELEMENT OF RISK FOR THE BOOTH ADULT SUPERVISION PLAN SHOULD BE DETAILED. ALL APPLICATIONS REQUIRE A PLOT PLAN BELOW.**

•	•	•	•	•	•	•	•	•	•	•	•
•	•	•	•	•	•	•	•	•	•	•	•
•	•	•	•	•	•	•	•	•	•	•	•
•	•	•	•	•	•	•	•	•	•	•	•
•	•	•	•	•	•	•	•	•	•	•	•
•	•	•	•	•	•	•	•	•	•	•	•
•	•	•	•	•	•	•	•	•	•	•	•
•	•	•	•	•	•	•	•	•	•	•	•

**BOOTH OR ACTIVITY PLOT PLAN (FLOOR PLAN) REQUIRED.**

Council Risk Management Approval		Date / /
----------------------------------	--	----------